

PIPES & FITTINGS

PRODUCT GUIDE



CONSISTENCY \ ADVICE \ QUALITY \ VALUE
FREEPHONE 0508 278 234 WWW.AQUAFIT.CO.NZ

AQUA-FIT
FOR PIPES AND FITTINGS

ABOUT AQUAFIT

We're in the business of getting water moving, and we have been for a long time.

Our family-owned business has had connections to the plumbing industry since 1969 – and we've worked in all aspects, from pipe manufacture, plumbing to drain laying, so we know the industry down to the ground.

Here at Aquafit we're pleased to be a strong, honest and efficient company, focused on supplying you with quality pipes, fittings, and sound advice whenever you need it.



SO WHY USE US?

When it comes to uPVC pipe and fittings, no one can help you better!

Rather than being a 'one stop plumbing shop with a bit of everything, we're focussed on doing one thing, and doing it really, really well – uPVC pipes and fittings.

And this really sets us apart...

We have what you need IN-STOCK, we promise GREAT SERVICE and guarantee your SATISFACTION.

OUR PROMISE

The key things that set us apart at Aquafit...

CONSISTENCY

Keeping our products constantly available and prices consistent is one of our main aims. Because we manufacture and purchase in bulk, you know we've always got what you need, and it keeps our prices steady too – no surprises.

ADVICE

We've made pipes and we've laid pipes – we know the industry inside and out – so if you need a question answered, or advice on how to get things done quickly and cost-effectively, we're always here to help. Just call us on 0508 AQUAFIT (0508 278 234)

QUALITY

As well as top quality pipes and fittings, we can also provide all the quality standards paperwork you need to get the job done. Ask us about any of the AS/NZS plumbing quality standards.

VALUE

There's a lot more to it than great products at great prices. At Aquafit we can offer you much more – a wealth of experience and advice when you need it, innovations that come from knowing the plumbing business intricately, and of course, great customer service bringing you the gear you need on time, every time.



STOCK \ SERVICE \ SATISFACTION

WHAT'S YOUR BUSINESS?

Over the 40 odd years we've been in business, we've picked up a bit (well, quite a lot really) on what our customers want and need for their particular industry.

In fact we've done the hard yards in some of these trades ourselves, so here's a little bit on how Aquafit can help you in your line of work.

No matter your trade, if it deals with water transport or storage, Aquafit has a solution for you.



DRAINAGE

If you're laying a drain, Aquafit has everything you'll need to get you from A to B.

Drainlayers choose Aquafit for the ease of ordering, guarantee of bulk stock whenever they want it and the peace of mind of knowing what they want is understood by the team at Aquafit. After all, we've got qualified drainlayers serving here.

Drainlayer's Favourite Products

GLUE SLIP COUPLER



PG 13

QUICKCOUPLERS



PG 30

CESSPITS



PG 34

DISPOSABLE GLOVES



PG 39

PLUMBING

Reliable, available stock. Another way we make your job easier and more efficient.

All plumbers use PVC pipe and fittings somewhere on their jobs. With a specialist team focussed purely on pipes and fittings, Aquafit knows how important it is to always have the right product on hand, which is why we stock all those handy, not-so-common products year round - to guarantee it's there when you need it.

Plumber's Favourite Products

FLOOR DRAIN KITS



PG 32

NON DRIP PRIMER



PG 39

REDUCING M&F BEND



PG 10

IN PIPE REDUCER



PG 13

ROOFING

We believe alongside working well, a downpipe should look great.

That's why we only supply quality pipe and fittings with consistent colouring for downpipes. Our large bore fittings are one piece molded for a downpipe system than LOOKS GREAT, WORKS GREATER and is available at the GREATEST value.

Roofer's Favourite Products

LARGE BORE MOLDED FITTINGS



PG 17

HOLDERBAT CLIPS



PG 29

GUTTER OUTLET DROPPERS



PG 19

HANDSAW



PG 39

BUILDERS, RURAL & OTHER TRADES

Whatever you do, if you need pipe and fittings you need to talk to Aquafit.

It is our mission to ensure we provide you with quality pipe, fittings and sound advice with great value

Tradie's Favourite Products

COIL DRAIN



PG 22

PRESSURE PIPE



PG 25

MDPE PIPE



PG 26

CULVERT PIPE



PG 17



Why Aquafit?

Stock & Consistency

Aquafit Manufacture and Purchase in bulk so we can have product consistently available at consistent prices

TABLE OF CONTENTS

	A DRAIN WASTE & VENT SYSTEMS 8 - 14
	B REDUCERS 15
	C STORMWATER SYSTEMS 16 - 19
	D RAINWATER SYSTEMS 20 - 21
	E LAND DRAINAGE SYSTEMS 22 - 23
	F uPVC PRESSURE SYSTEMS 24 - 25
	G POLYETHYLENE PRESSURE PIPES 26 - 27
	H PIPE CLIP SYSTEMS 28 - 29
	I QUICK COUPLERS 30 - 31
	J FLOOR DRAIN SYSTEMS 32 - 33
	K SURFACE DRAINAGE SYSTEMS 34 - 35
	L HEAVY DUTY SEWER SYSTEMS 36 - 37
	M CUSTOM BUILDS 38
	N ACCESSORIES 39

DRAIN WASTE & VENT SYSTEMS

Drain waste & vent systems are the building blocks of plumbing. And when it comes to getting the basics right, we've got you covered.

We carry a full range of uPVC pipes and fittings from 32-375mm diameter for residential, commercial and industrial projects.

And because we're DWV specialists, we always carry high stock units so you can get straight on with the job – no hold ups.

DWV QUICKFACTS

As per AS/NZS 1260...

- Pipes of nominal diameter up to and including 80mm have no pipe stiffness requirement – they're specified solely on materials and dimensions
- Pipes 100mm+ are specified by minimum stiffness
- Class SN4 & SN6 are suitable for plumbing and domestic use – unless otherwise specified, these will be supplied
- Classes SN8, SN10 & SN16 are available on request



Questions about Aquafit products or the related AS/NZS 1260 standards? Give us a call – 0508 AQUAFIT.

Sizing Chart Tip

Sometimes there's confusion around actual pipe diameters compared to their 'so-called' size. So we've laid out all the specs side by side, so you can see exactly what you're getting...

PLAIN WALL PIPE DIMENSIONS - AS/NZS 1260			
Nominal Size (so-called size)	Mean Outside Diameter		Internal Diameter
	Minimum	Maximum	Minimum
32	36.2	36.5	30.0
40	42.8	43.1	36.0
50	55.7	56.0	48.0
65	68.7	69.1	60.0
80	82.3	82.7	73.0
100	110.0	110.4	98.0
150	160.0	160.5	143.0
175	200.0	200.6	178.0
225	250.0	250.7	224.0
300	315.0	315.9	274.0
375	400.0	401.0	352.0

PIPE - SOLVENT CEMENT JOINT X 6M



DESCRIPTION	ITEM NO.
32mm	100.32
40mm	100.40
50mm	100.50
65mm	100.65
80mm	100.80
150mm	100.150
175mm	100.175
225mm	100.225

PIPE - RUBBER RING JOINT X 6M



DESCRIPTION	ITEM NO.
100mm	100.100.RJ
150mm	100.150.RJ
175mm	100.175.RJ
225mm	100.225.RJ
300mm	100.300.RJ
375mm	100.375.RJ

PIPE - CUT LENGTHS 1 METER



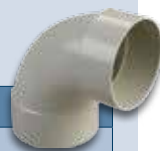
DESCRIPTION	ITEM NO.
32mm	100.32.1
40mm	100.40.1
50mm	100.50.1
65mm	100.65.1
80mm	100.80.1
100mm	100.100.1
150mm	100.150.1
175mm	100.175.1
225mm	100.225.1
300mm	100.300.1
375mm	100.375.1

PIPE - CUT LENGTHS 4 METER



DESCRIPTION	ITEM NO.
80mm	100.80.4

PLAIN BEND



DESCRIPTION		ITEM NO.
32mm	15°	101.32.15
	45°	101.32.45
	60°	101.32.60
	88°	101.32.88
40mm	15°	101.40.15
	45°	101.40.45
	60°	101.40.60
	88°	101.40.88
50mm	15°	101.50.15
	45°	101.50.45
	60°	101.50.60
	88°	101.50.88
65mm	15°	101.65.15
	45°	101.65.45
	88°	101.65.88
80mm	15°	101.80.15
	45°	101.80.45
	88°	101.80.88
100mm	5°	101.100.5
	11°	101.100.11
	15°	101.100.15
	22°	101.100.22
	30°	101.100.30
	45°	101.100.45
	60°	101.100.60
	88°	101.100.88
150mm	15°	101.150.15
	45°	101.150.45
	88°	101.150.88

ADJUSTABLE BEND



DESCRIPTION	ITEM NO.
150mm	101.150A

**NOW
AVAILABLE**

100mm
11° & 22° Double
Female Bends



PLAIN BEND M & F

DESCRIPTION		ITEM NO.
40mm	45°	171.40.45
	88°	171.40.88
50mm	45°	171.50.45
	88°	171.50.88
65mm	45°	171.65.45
	88°	171.65.88
80mm	45°	171.80.45
	88°	171.80.88
100mm	5°	171.100.5
	11°	171.100.11
	15°	171.100.15
	22°	171.100.22
	30°	171.100.30
	45°	171.100.45
	60°	171.100.60
	88°	171.100.88
150mm	15°	171.150.15
	45°	171.150.45
	88°	171.150.88

PLAIN BEND
M & F IN PIPE

DESCRIPTION	ITEM NO.
40mm x 88°	171.40.88P
50mm x 88°	171.50.88P
65mm x 88°	171.65.88P



SIDE ACCESS BEND

DESCRIPTION	ITEM NO.
100mm x 45°	103.100.45
100mm x 88°	103.100.88



INSPECTION BEND

DESCRIPTION		ITEM NO.
40mm	40mm x 45°	101.40.45W
	40mm x 88°	101.40.88W
50mm	50mm x 45°	101.50.45W
	50mm x 88°	101.50.88W
65mm	65mm x 45°	101.65.45W
	65mm x 88°	101.65.88W
80mm	80mm x 45°	101.80.45W
	80mm x 88°	101.80.88W
100mm	100mm x 88°	101.100.88W



REAR ACCESS BEND

DESCRIPTION	ITEM NO.
100mm x 88°	102.100.88



REDUCING BEND M&F

DESCRIPTION	ITEM NO.
50mm x 40mm x 45°	171.50.40.45



PLAIN JUNCTION

DESCRIPTION		ITEM NO.
32mm	45°	104.32.45
	88°	104.32.88
45mm	45°	104.40.45
	88°	104.40.88
50mm	45°	104.50.45
	88°	104.50.88
65mm	45°	104.65.45
	88°	104.65.88
80mm	45°	104.80.45
	88°	104.80.88
100mm	45°	104.100.45
	88°	104.100.88
150mm	45°	104.150.45
	88°	104.150.88



REDUCING JUNCTION

DESCRIPTION		ITEM NO.
50mm x 32mm	88°	104.50.32.88
50mm x 40mm	88°	104.50.40.88
80mm x 50mm	45°	104.80.50.45
	88°	104.80.50.88
100mm x 50mm	45°	104.100.50.45
	88°	104.100.50.88
100mm x 65mm	45°	104.100.65.45
100mm x 80mm	45°	104.100.80.45
150mm x 100mm	45°	104.150.100.45
	88°	104.150.100.88



TEE JUNCTION

DESCRIPTION	ITEM NO.
100mm	133.100



DOUBLE JUNCTION

DESCRIPTION	ITEM NO.
50mm x 88°	106.50.88
80mm x 88°	106.80.88
100mm x 88°	106.100.88



REDUCING DOUBLE JUNCTION

DESCRIPTION	ITEM NO.
150mm x 100mm x 88°	106.150.100.88



INSPECTION JUNCTION

DESCRIPTION	ITEM NO.
32mm 88°	104.32.88W
40mm 88°	104.40.88W
50mm 88°	104.50.88W
65mm 88°	104.65.88W
80mm 88°	104.80.88W
100mm 88°	104.100.88W



REAR ACCESS JUNCTION

DESCRIPTION	ITEM NO.
80mm 88°	105.80.88
100mm 88°	105.100.88



SIDE ACCESS JUNCTION

DESCRIPTION		ITEM NO.
100mm x 45°	LH	107.100.45 LH
	RH	107.100.45 RH
150mm x 45°	LH	107.150.45 LH
	RH	107.150.45 RH



INSPECTION PIPE

	DESCRIPTION	ITEM NO.
80mm	M & F	129.80
	F & F	129.80F
100mm	M & F	129.100
	F & F	129.100F
	LARGE OPENING	129.100M
150mm	F & F	129.150F



FLOOR WASTE GULLY

DESCRIPTION	ITEM NO.
80mm x 50mm	159.80.50
80mm x 65mm	159.80.65
100mm x 50mm	159.100.50
100mm x 65mm	159.100.65



4 WAY RISER JUNCTION

DESCRIPTION	ITEM NO.
80mm	174.80
100mm	174.100



LEAK CONTROL FLANGE

DESCRIPTION		ITEM NO.
80mm	FOR TILE	126.80
	FOR VINYL	126.80V
100mm	FOR TILE	126.100
	FOR VINYL	126.100V



GULLY TRAP

DESCRIPTION	ITEM NO.
80mm	159.80
100mm	159.100



GULLY DISH AND LID

DESCRIPTION	ITEM NO.
100mm DISH AND LID	1575.100
100mm LID ONLY	1575.100L



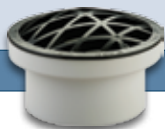
GULLY DISH EXTENSION

DESCRIPTION	ITEM NO.
100mm	176.100.100
200mm	176.100.200
300mm	176.100.300



FINISHING COLLAR AND GRATE

DESCRIPTION	ITEM NO.
100mm	168.100
100mm COLLAR ONLY	168.100C
100mm GRATE ONLY	168.100G



RUBBER RING SLIP COUPLER

DESCRIPTION	ITEM NO.
100mm	1551.100
150mm	1551.150



SLIP COUPLER

DESCRIPTION	ITEM NO.
100mm	151G.100
150mm	151G.150



EXPANSION SOCKET

DESCRIPTION	ITEM NO.
80mm	111.80
100mm	111.100



SLAB REPAIR

DESCRIPTION	ITEM NO.
40mm	178.40
50mm	178.50
65mm	178.65
80mm	178.80
100mm	178.100
100mm EARTHENWARE	178.100E
100mm - PIPE	178.100P
150mm	178.150
150mm - PIPE	178.150P
175mm	178.175
225mm	178.225



**FITS
INSIDE PIPE
FOR EASY
FIX**

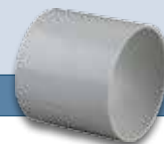
TRAP SCREW

DESCRIPTION	ITEM NO.
100mm	120.100
150mm	120.150



SOCKET

DESCRIPTION	ITEM NO.
32mm	110.32
40mm	110.40
50mm	110.50
65mm	110.65
80mm	110.80
100mm	110.100



THREADED SOCKET

DESCRIPTION	ITEM NO.
100mm	110.100T
150mm	110.150T



SCREW CAP AND BASE

DESCRIPTION	ITEM NO.
32mm	136.32
40mm	136.40
50mm	136.50
80mm	136.80
100mm	136.100
150mm	136.150



SCREW CAP

DESCRIPTION	ITEM NO.
100mm	136.100C
150mm	136.150C



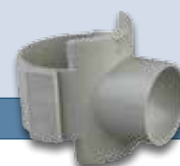
PUSH ON CAP

DESCRIPTION	ITEM NO.
32mm	137.32
40mm	137.40
50mm	137.50
65mm	137.65
80mm	137.80
100mm	137.100
150mm	137.150



STRAP BOSS

DESCRIPTION	ITEM NO.
80mm x 50mm	119.80.50
100mm x 50mm	119.100.50



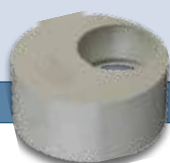
LEVEL INVERT

DESCRIPTION	ITEM NO.
40mm x 32mm	123.40.32
50mm x 32mm	123.50.32
50mm x 40mm	123.50.40
65mm x 40mm	123.65.40
65mm x 50mm	123.65.50
80mm x 50mm	123.80.50
80mm x 65mm	123.80.65
100mm x 50mm	123.100.50
100mm x 65mm	123.100.65
100mm x 80mm	123.100.80
150mm x 100mm	123.150.100



REDUCING BUSH

DESCRIPTION	ITEM NO.
40mm x 32mm	124.40.32
50mm x 32mm	124.50.32
50mm x 40mm	124.50.40
65mm x 40mm	124.65.40
65mm x 50mm	124.65.50
80mm x 50mm	124.80.50
80mm x 65mm	124.80.65
100mm x 40mm	124.100.40
100mm x 50mm	124.100.50
100mm x 65mm	124.100.65
100mm x 80mm	124.100.80
150mm x 100mm	124.150.100



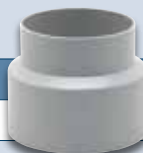
PIPE REDUCER

DESCRIPTION	ITEM NO.
50mm x 40mm	198.50.40
65mm x 40mm	198.65.40
65mm x 50mm	198.65.50
100mm x 40mm	198.100.40
100mm x 50mm	198.100.50
100mm x 65mm	198.100.65



INVERTED REDUCER

DESCRIPTION	ITEM NO.
150mm x 100mm	125.150.100



GLUE SLIP COUPLER



HOW TO USE:

1. Slide coupler onto pipe without glue
2. Liberally glue the pipes only
3. Twist and slide backover the glued pipes

DESCRIPTION	ITEM NO.
100mm	151G.100
150mm	151G.150

For another quick and effective joining method check our

Quick Couplers
on pg 30



FEMALE TRAP CONNECTOR

DESCRIPTION	ITEM NO.
32mm	112.32
40mm	112.40
50mm	112.50
65mm	112.65



MALE TRAP CONNECTOR

DESCRIPTION	ITEM NO.
32mm	113.32
40mm	113.40
50mm	113.50
100mm	113.100



COPPER ADAPTOR

DESCRIPTION	ITEM NO.
32mm	114.32
40mm	114.40
50mm	114.50
80mm	114.80
100mm	114.100



PAN CONNECTOR

DESCRIPTION	ITEM NO.
80mm	127.80
80mm OFFSET	127.800
100mm	127.100
100mm OFFSET	127.1000



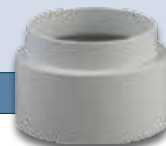
Why Aquafit?

Stock

Aquafit Manufacture and Purchase in bulk so we've always got what you need

WEATHER APRON

DESCRIPTION	ITEM NO.
40mm	131.40
50mm	131.50
65mm	131.65
80mm	131.80
100mm	131.100
150mm	131.150



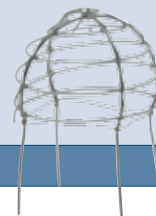
COWL

DESCRIPTION	ITEM NO.
40mm	150.40
50mm	150.50
65mm	150.65
80mm	150.80
100mm	150.100
150mm	150.150



GALVANISED WIRE COWL

DESCRIPTION	ITEM NO.
80mm	150.80G
100mm	150.100G
150mm	150.150G
200mm	150.200G
250mm	150.250G



FRESH AIR INLET

DESCRIPTION	ITEM NO.
100mm	1516.100



FLAP VALVE

DESCRIPTION	ITEM NO.
50mm	183.50



KEEP VERMIN OUT

RR SLIP COUPLER

DESCRIPTION	ITEM NO.
100mm	1551.100
150mm	1551.150



NEED MEDLUBE?
PAGES 39

DON'T DOWNGRADE ON QUALITY & CHOICE

We've got the biggest range of reducers you can find.

Here at Aquafit we can reduce any pipe from 375mm to 32mm.

Let us know the reducer type and sizes you need

Phone 0508 AQUAFIT



REDUCING BUSHES



CONCENTRIC REDUCER



LEVEL INVERT



FITS
INSIDE
PIPE

PIPE REDUCER

STORM WATER SYSTEM

From commercial grade downpipes to streamlined home drainage systems, we've designed a tough and practical range for collecting and directing excess water where you need it to go.

Check out our large bore stormwater systems – a popular choice for commercial downpipe applications, moulded fittings, sweeping tight radiuses, smart colours that match our pipe range and look so good you won't be painting them.

Plus, smart, strong alloy clipping systems to finish it all off (see Holderbat Clips on page 29).

All our stormwater systems are available from 90-500mm diameter and we always carry high stock units so you can get exactly what you need any time.



Questions about Aquafit products or the related AS/NZS 1254 standard? Give us a call – 0508 AQUAFIT.

Sizing Chart Tip

This sizing chart from AS/NZS 1254 lays out all the pipe sizes side by side so there's no confusion.

PLAIN WALL PIPE DIMENSIONS - AS/NZS 1260			
Nominal Size (so-called size)	Mean Outside Diameter		Mean Internal Diameter
	Minimum	Maximum	Minimum
90	90.0	90.3	80.0
100	110.0	110.4	98.0
150	160.0	160.5	143.0
175	200.0	200.6	178.0
225	250.0	250.7	224.0
250	280.0	280.8	253.0
300	315.0	315.9	274.0
375	400.0	401.0	352.0
475	500.0	501.0	440.0
600	630.0	631.0	554.0

PIPE - SOLVENT CEMENT JOINT X 6M



DESCRIPTION	ITEM NO.
90mm	700.90
100mm	700.100
150mm	700.150
175mm	700.175
225mm	700.225

PIPE - RUBBER RING JOINT X 6M



DESCRIPTION	ITEM NO.
100mm	700.100.RJ
150mm	700.150.RJ
175mm	700.175.RJ
225mm	700.225.RJ
300mm	700.300.RJ
375mm	700.375.RJ

CULVET PIPE



DESCRIPTION	ITEM NO.
150mm	700.150C
200mm	700.200C
250mm	700.250C
300mm	700.300C
400mm	700.400C
500mm	700.500C

Why Aquafit?

Quality with Value

Aquafit large bore fittings are one piece molded for a system with
GREAT LOOKS, GREATER STRENGTH
at **GREATEST VALUE**

Quick Tip

For 100mm stormwater fittings, just use 100mm DWV fittings – from page 9

It'll give you a wider range, better quality and better value.

Though if you must have stormwater fittings, just talk to us 0508 278234

PLAIN BEND



DESCRIPTION	ITEM NO.
90mm x 15°	701.90.15
90mm x 22°	701.90.22
90mm x 45°	701.90.45
90mm x 88°	701.90.88
150mm x 15°	701.150.15
150mm x 45°	701.150.45
150mm x 88°	701.150.88
175mm x 11°	701.175.11
175mm x 15°	701.175.15
175mm x 22°	701.175.22
175mm x 45°	701.175.45
175mm x 88°	701.175.88
225mm x 11°	701.225.11
225mm x 15°	701.225.15
225mm x 22°	701.225.22
225mm x 30°	701.225.30
225mm x 45°	701.225.45
225mm x 88°	701.225.88
300mm x 11°	701.300.11
300mm x 22°	701.300.22
300mm x 45°	701.300.45
300mm x 88°	701.300.88
375mm x 45°	701.375.45
375mm x 88°	701.375.88

PLAIN BEND M & F

DESCRIPTION	ITEM NO.
90mm x 45°	771.90.45
90mm x 88°	771.90.88



PLAIN JUNCTION

DESCRIPTION	ITEM NO.
90mm x 45°	704.90.45
90mm x 88°	704.90.88
150mm x 45°	704.150.45
150mm x 88°	704.150.88
175mm x 45°	704.175.45
175mm x 88°	704.175.88
225mm x 45°	704.225.45
225mm x 88°	704.225.88
300mm x 45°	704.300.45
300mm x 88°	704.300.88
375mm x 45°	704.375.45
375mm x 88°	704.375.88



GLUE SLIP COUPLER

DESCRIPTION	ITEM NO.
90mm	751G.90
175mm	751G.175
225mm	751G.225
300mm	751G.300



SOCKET

DESCRIPTION	ITEM NO.
90mm	710.90
150mm	710.150
175mm	710.175
225mm	710.225
300mm	710.300



SCREW CAP

DESCRIPTION	ITEM NO.
90mm	736C.90
90mm GASKET	736G.90



PUSH ON CAP

DESCRIPTION	ITEM NO.
90mm	737.90
175mm	737.175
225mm	737.225
300mm	737.300



SCREW CAP AND BASE

DESCRIPTION	ITEM NO.
90mm	736.90
175mm	736.175
225mm	736.225
300mm	736.300



RUBBER RING SLIP COUPLER

DESCRIPTION	ITEM NO.
175mm	751.175
225mm	751.225
300mm	751.300



REDUCING JUNCTION

DESCRIPTION	ITEM NO.
150mm x 100mm x 45°	704.150.100.45
150mm x 100mm x 88°	704.150.100.88
175mm x 100mm x 45°	704.175.100.45
175mm x 100mm x 88°	704.175.100.88
175mm x 150mm x 45°	704.175.150.45
175mm x 150mm x 88°	704.175.150.88
225mm x 100mm x 45°	704.225.100.45
225mm x 100mm x 88°	704.225.100.88
225mm x 150mm x 45°	704.225.150.45
225mm x 150mm x 88°	704.225.150.88
225mm x 175mm x 45°	704.225.175.45
225mm x 175mm x 88°	704.225.175.88
300mm x 100mm x 45°	704.300.100.45
300mm x 100mm x 88°	704.300.100.88
300mm x 150mm x 45°	704.300.150.45
300mm x 150mm x 88°	704.300.150.88
300mm x 175mm x 45°	704.300.175.45
300mm x 175mm x 88°	704.300.175.88
300mm x 225mm x 45°	704.300.225.45
300mm x 225mm x 88°	704.300.225.88
375mm x 100mm x 45°	704.375.100.45
375mm x 100mm x 88°	704.375.100.88
375mm x 150mm x 45°	704.375.150.45
375mm x 150mm x 88°	704.375.150.88
375mm x 175mm x 45°	704.375.175.45
375mm x 175mm x 88°	704.375.175.88
375mm x 225mm x 45°	704.375.225.45
375mm x 225mm x 88°	704.375.225.88



LEVEL INVERT

DESCRIPTION	ITEM NO.
175mm x 150mm	723.175.150
175mm x 150mm	723.175.150
225mm x 100mm	723.225.100
225mm x 150mm	723.225.150
225mm x 175mm	723.225.175
300mm x 150mm	723.300.150
300mm x 175mm	723.300.175
300mm x 225mm	723.300.225

**NEED
GLUE?**

PAGE 39

INVERTED REDUCER F+F

DESCRIPTION	ITEM NO.
90mm x 65mm	725.90.65
90mm x 80mm	725.90.80
100mm x 80mm	725.100.80
100mm x 90mm	725.100.90

REDUCING BUSH

DESCRIPTION	ITEM NO.
90mm x 80mm	724.90.80
100mm x 90mm	724.100.90
175mm x 100mm	724.175.100
175mm x 150mm	724.175.150
225mm X 150mm	724.225.150
225mm x 175mm	724.225.175
300mm x 150mm	724.300.150
300mm X 175mm	724.300.175
300mm x 225mm	724.300.225

PIPE REDUCER - IN PIPE

DESCRIPTION	ITEM NO.
100mm x 90mm	798.100.90

**FITS
INSIDE
PIPE**

Why Aquafit?

Advice

We've made pipes
and we've laid pipes.

Aquafit has been supplying PVC in NZ
for over 10 years and have key staffs
that have been involved in the plumbing
industry since 1969.

If you need advice we're here to help.

GRATE

DESCRIPTION	ITEM NO.
90mm	728.90

KERB OUTLET

DESCRIPTION	ITEM NO.
90mm	165.90
100mm	165.100

GUTTER OUTLET

DESCRIPTION	ITEM NO.
100mm	799.100
150mm	799.150
150mm - Metal	799.150M
175mm - Metal	799.175M
225mm - Metal	799.225M

RAINWATER SYSTEMS

Utilising rainwater can have a big impact for home or business.

And to make the most of it, it pays to do things right so not a drop of that clear, fresh and free water is wasted.

At Aquafit we only supply rainwater systems that are lead-free and suitable for collecting rainwater for drinking.

Available in 65 and 80mm diameters, our clean, smart systems are UV stabilised to ensure their good looks will last.



Quick Tip

For commercial use, consider an 80mm DWV system
Stronger, longer pipe lengths, larger fitting range and alloy adjustable clips for easy installation

DOWNPIPE X 3M



DESCRIPTION	ITEM NO.
65mm	RP65
80mm	RP80

PLAIN BEND



DESCRIPTION	ITEM NO.
65mm	RB2.65
80mm	RB2.80
65mm	RB3.65
80mm	RB3.80

CLIP



DESCRIPTION	ITEM NO.
65mm	RC65
80mm	RC80
65mm	RC65.2
80mm	RC80.2

Downpipe Connectors

Great fitting
for connecting
downpipes
to 100mm
and
90mm
pipes

- see page 19



DESCRIPTION	ITEM NO.
90mm x 80mm	725.90.80
100mm x 80mm	725.100.80

COMMERCIAL DOWNPIPES

We believe alongside working well, a downpipe should look great. That's why we only supply quality pipe and fittings with consistent colouring for downpipes.

Our large bore fittings are one piece molded for a downpipe system than LOOKS GREAT, WORKS GREATER and is available at the GREATEST value.

See from page 17 for Large Bore products



LARGE BORE MOULDED FITTINGS

GREAT LOOKS. GREATER STRENGTH. GREATEST VALUE



Quick Tip

With Coil Drain installations using the standard uPVC drainage fittings gives you best value, more flexibility and more choice. (see section A & C)



LAND DRAINAGE SYSTEMS

From front yard, to back paddock...

We have all you need to get land draining efficiently.

We specialise in drainage piping and fittings to remove unwanted water quickly and effectively.

Our drainage systems are available slotted or unslotted, in 65, 110 and 160mm diameters, and are available in a range of coil lengths to suit your needs.

NEED A
CESSPIT?
WE'VE GOT
LOADS -
PAGES 34

Quick Tip

A minimum fall of 1:100 is necessary when using land drainage coil



COIL DRAIN PUNCHED - ROLL

DESCRIPTION	ITEM NO.
65mm x 15m	400.65.15
65mm x 30m	400.65.30
65mm x 150m	400.65.150
100mm x 15m	400.100.15
100mm x 30m	400.100.30
100mm x 50m	400.100.50
100mm x 100m	400.100.100
100mm x 450m	400.100.450
160mm x 15m	400.150.15
160mm x 45m	400.150.45
160mm x 185m	400.150.185

TIP:
USE DWV
FITTINGS FOR
COIL DRAIN

FILTERCLOTH

DESCRIPTION	ITEM NO.
100mm	DFSC

COIL DRAIN UNPUNCHED

DESCRIPTION	ITEM NO.
65mm x 15m Roll	500.65.15
65mm x 30m Roll	500.65.30
100mm x 15m Roll	500.100.15
100mm x 30m Roll	500.100.30
100mm x 50m Roll	500.100.50
100mm x 100m Roll	500.100.100
150mm X 15m Roll	500.150.15
150mm X 45m Roll	500.150.45

FILTERSLEEVE

DESCRIPTION	ITEM NO.
65mm	DFS65
PRELOADED	
100mm x 15m	DFS100.15
100mm x 30m	DFS100.30
160mm x 45m	DFS160.45

PRELOAD
EASY
APPLICATORS

uPVC PRESSURE SYSTEMS

Under pressure?

We've got you covered.

When it comes to uPVC pressure pipes and fittings, there's no one better to talk to. Let us know your sizes and pressure ratings and we can work out a custom quote. Talk to us today.

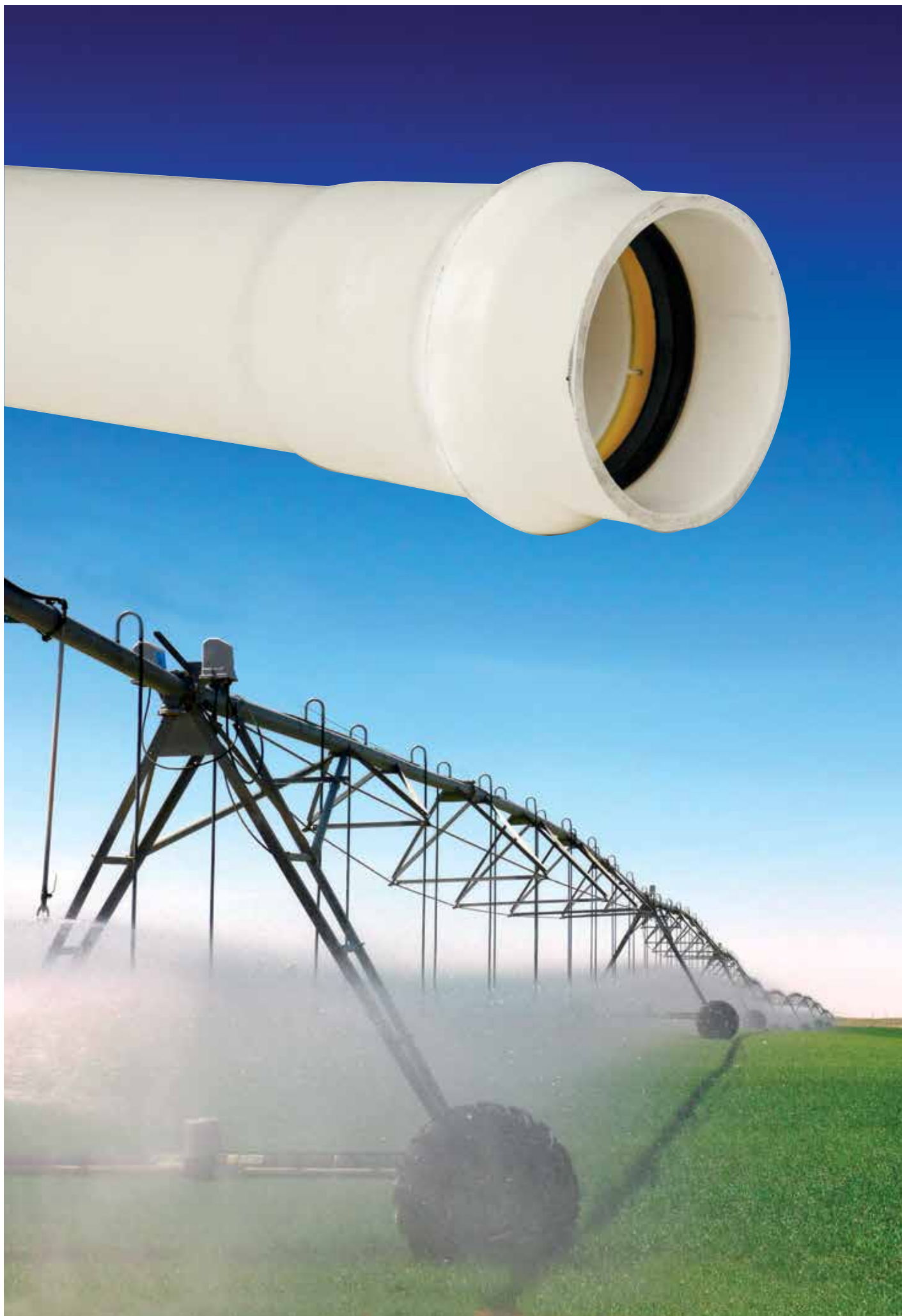
PRESSURE PN RATING CHARTS

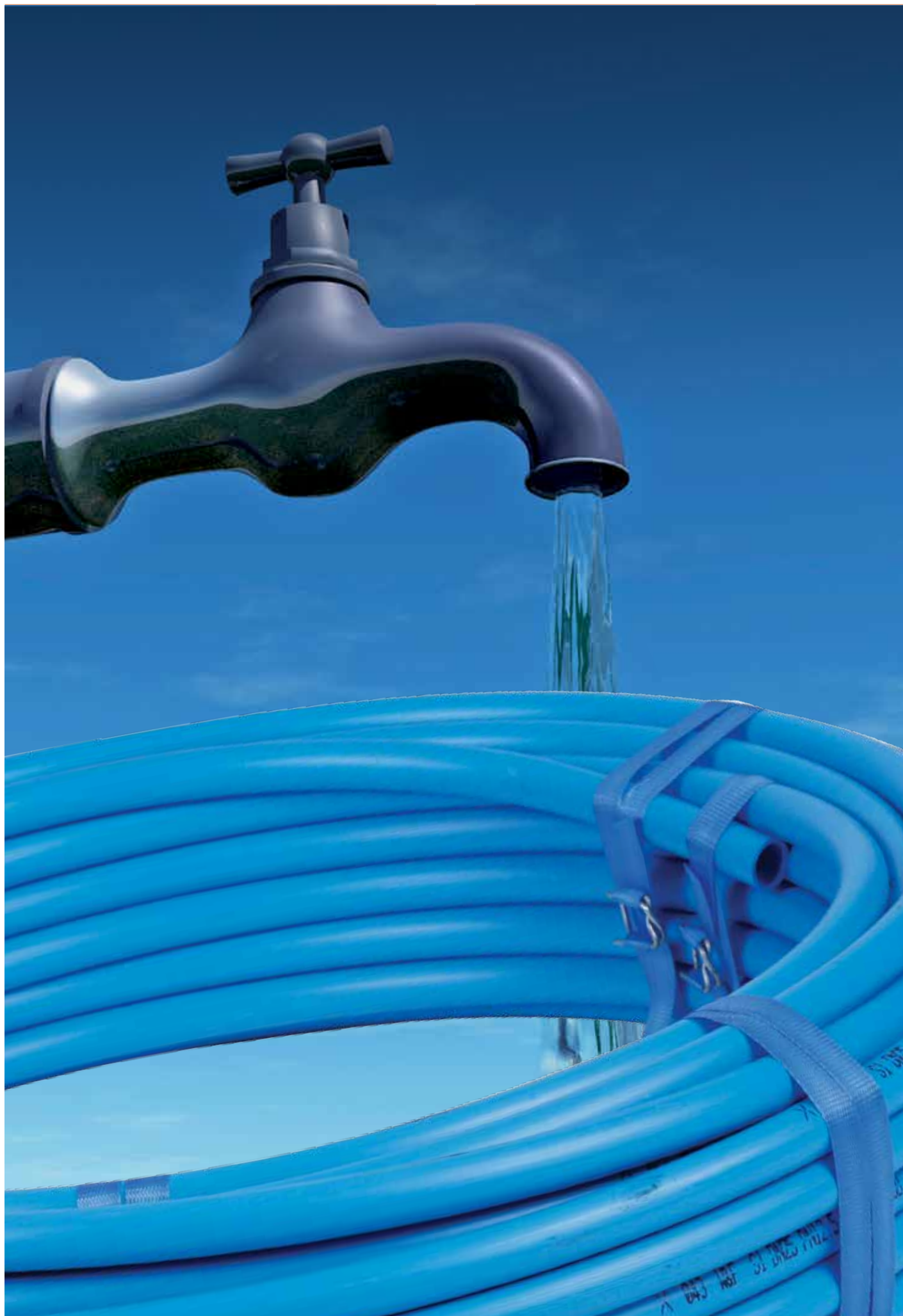
We have all the information available on the AS/NZS 1477 PVC Pipes & Fittings for Pressure Applications standards, so talk to us if you need some advice – 0508 AQUAFIT.

Questions about Aquafit products or the related AS/NZS 1477 standards? Give us a call – 0508 AQUAFIT.

Pressure Rating Chart

PRESSURE PN RATING CHART					
PN6	CLASS B	Rated 60m head	0.6 MPa	600 KPa	87 PSI
PN9	CLASS C	Rated 90m head	0.9 MPa	900 KPa	130 PSI
PN12	CLASS D	Rated 120m head	1.2 MPa	1200 KPa	173 PSI
PN15	CLASS E	Rated 150m head	1.5 MPa	1500 KPa	217 PSI
PN18	CLASS F	Rated 180m head	1.8 MPa	1800 KPa	260 PSI





POLYETHYLENE PRESSURE PIPES

Our tough polyethylene pressure pipes are made to do the hard yards.

Medium density polyethylene pipe is a reliable, economical, lightweight yet strong and flexible pipe ideal for pressure mains and effluent lines, most often used for urban water supply.

We have a range of coil sizes available, as well as fittings – so talk to us today about choosing the right bits for your next job.

CAN'T FIND WHAT YOU'RE LOOKING FOR?

Just ask – we've got larger bore pipes, straight lengths, lateral pipe, low density pipe and Imperial MD pipe – just let us know what you're looking for.

We've got all the related standards available for you, so add a copy to your order – AS/NZS 4130 and AS/1460.



POLYETHYLENE PRESSURE PIPE MEASUREMENTS & PRESSURE RATINGS

Nominal Bore ID (mm)	Mean Bore ID (mm)	Pipe OD (mm)	Pressure Rating
15	16.10	20	PN 12.5
20	20.10	25	PN 12.5
25	25.9	32	PN 12.5
32	32.3	40	PN 12.5
40	40.5	50	PN 12.5
50	51.0	63	PN 12.5

Sizing and Pressure Rating Chart

PIPE CLIP SYSTEMS

As specialists in pipe and fittings it only makes sense that we provide a clipping system too.

And not just one clipping system at that – we have a whole range of clipping systems to do the job or meet the look you're going for.

Our alloy Holderbat system is a favourite – incredibly simple to use with independent, fully adjustable legs, great value and built to last.

Ask us for a sample today.

We carry stock for clipping systems from 32-300mm and we can also custom build to fit your job exactly.

Just let us know your requirements.



PIPE CLIP

DESCRIPTION	ITEM NO.
32mm	140.32
40mm	140.40
50mm	140.50
65mm	140.65
80mm	140.80
90mm	140.90
100mm	140.100



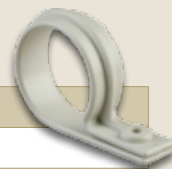
PIPE CLIP STANDOFF

DESCRIPTION	ITEM NO.
32mm	140.32S
40mm	140.40S
50mm	140.50S
65mm	140.65S
80mm	140.80S
100mm	140.100S



PIPE CLIP STANDOFF HANGER

DESCRIPTION	ITEM NO.
32mm	140.32D
40mm	140.40D
50mm	140.50D
65mm	140.65D
80mm	140.80D
100mm	140.100D



Why Aquafit?

Value

Great Products at Great Prices!

MUNZING RING

DESCRIPTION	ITEM NO.
32mm	140.32MR
40mm	140.40MR
50mm	140.50MR
65mm	140.65MR
80mm	140.80MR
90mm	140.90MR
100mm	140.100MR
150mm	140.150MR
175mm	140.175MR
225mm	140.225MR
300mm	140.300MR



MUNZING RING INSULATED

DESCRIPTION	ITEM NO.
32mm	140.32MRI
40mm	140.40MRI
50mm	140.50MRI
65mm	140.65MRI
80mm	140.80MRI
100mm	140.100MRI
150mm	140.150MRI
175mm	140.175MRI



ALUMINIUM HOLDER BAT



**GREAT
PRODUCT**

- Independant fully Adjustable Legs
- Strong and Durable
- Great Value

DESCRIPTION	ITEM NO.
65mm	140.65HB
80mm	140.80HB
100mm	140.100HB
150mm	140.150HB
200mm	140.200HB
250mm	140.250HB
300mm	140.300HB

Offsets for Holder Bat legs

Standard leg 20mm - 70mm

Medium leg 60mm -110mm

Long leg 100mm - 150mm

ALUMINIUM HOLDER BAT LEG

DESCRIPTION	ITEM NO.
LONG	140.HBEL
MED	140.HBEM



QUICK COUPLERS

Gone are the days of rubber sleeves and wire ties...

Quick Couplers make tough jobs like pipe repairs or joining earthenware to PVC pipes an ultra simple task.

They're a quick and very effective fix saving you time, materials and money.

We stock Quick Couplers for pipes from 32-375mm in diameter.



PVC COUPLER



DESCRIPTION	ITEM NO.
32mm	32.PQ
40mm	40.PQ
50mm	50.PQ
65mm	65.PQ
80mm	80.PQ
90mm	90.PQ
100mm	100.PQ
150mm	150.PQ
200mm	200.PQ
250mm	250.PQ
300mm	300.PQ
375mm	375.PQ

EARTHENWARE COUPLER



DESCRIPTION	ITEM NO.
100mm	100.EQ
150mm	150.EQ

UNISEAL

DESCRIPTION	ITEM NO.
100mm	US100
150mm	US150
50mm	US50
80mm	US80
90mm	US90



EARTHENWARE TO PVC COUPLER

DESCRIPTION	ITEM NO.
100mm	100.EPQ
150mm	150.EPQ
225mm	225.EPQ



REDUCING COUPLER

DESCRIPTION	ITEM NO.
100mm x 80mm	100.80.PQ
150mm x 100mm	150.100PQ
200mm x 150mm	200.150PQ
250mm x 200mm	250.200.PQ
300mm x 250mm	300.250PQ



QUICK COUPLER ID Sizing Chart

COLOUR KEY

PVC COUPLER - For connecting PVC to PVC (or any combination of Cast Iron, Copper, Galvanised Steel and Lead)

EARTHENWARE COUPLER - For connecting Earthenware to Earthenware

EARTHENWARE TO PVC COUPLER - For connecting Earthenware to PVC

REDUCING COUPLER - For connecting PVC to PVC (or any combination of Cast Iron, Copper, Galvanised Steel and Lead)



		B (INSIDE DIAMETER IN MM)											
		42	49	62	70	86	92	112	144	160	200	260	315
A (INSIDE DIAMETER IN MM)	42	32.PQ											
	49		40.PQ										
	62			50.PQ									
	70				65.PQ								
	86					80.PQ							
	92						90.PQ						
	112					100.80.PQ		100.PQ					
	144							100.EPQ	100.EQ				
	160							150.100.PQ		150.PQ			
	200									150.EPQ	200.PQ		
	260									200.150.PQ	150.EQ		
	315										250.200.PQ	250.PQ	
												300.250.PQ	300.PQ

**QUICK
FACT**

Quick Couplers have 5% plus or minus tolerance on the given inside diameters

FLOOR DRAIN SYSTEMS

We reckon simple is always better.

And we've made things super simple for you with our complete Floor Drain Kits – everything you need to get the job done.

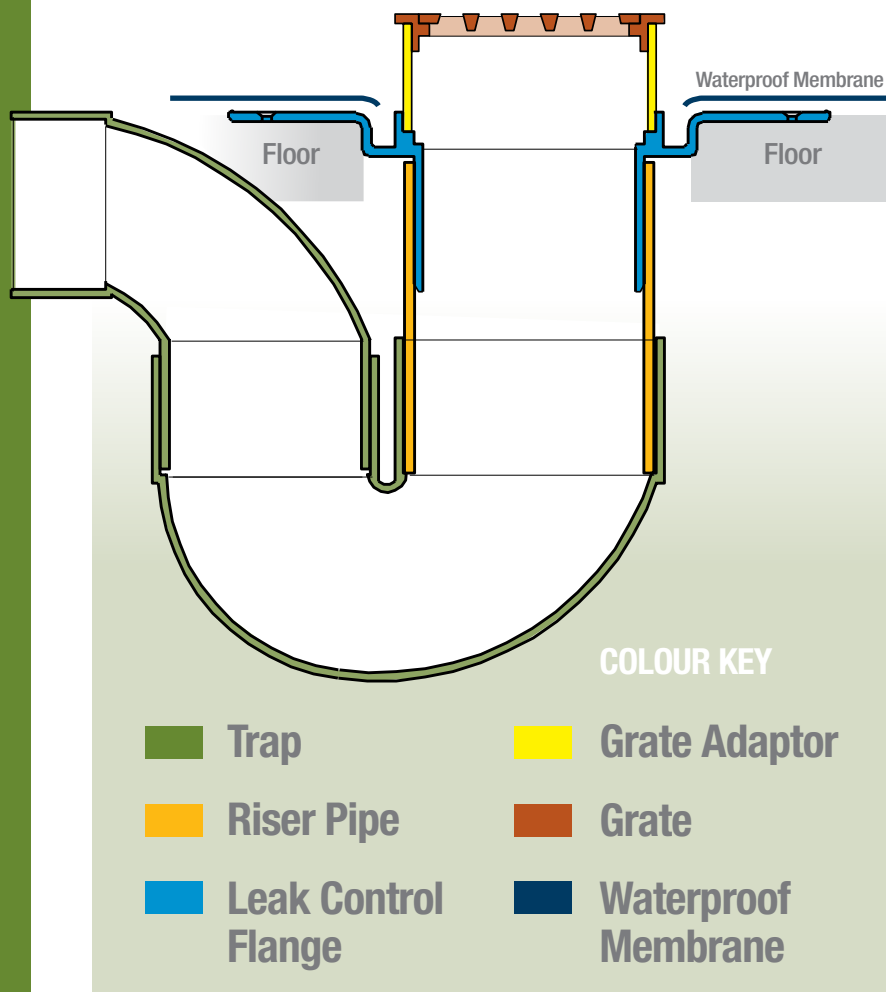
The kit includes a chrome brass grate, leak control flange, floor waste gully and riser pipe.

Stylish and easy to install, we have options for tile, vinyl and other waterproof flooring.

They're great quality, good looking and work out very good value.

So why not make the job simple with an Aquafit Floor Drain kit?

Or if you just need a single part, we sell them all separately too.



FLOOR DRAIN KIT INSTALLATION INSTRUCTIONS

For Tile:

1. Fix **LEAK CONTROL FLANGE** in place on floor using screws/sealant
2. Attach **RISER PIPE** and **TRAP** underneath **LEAK CONTROL FLANGE** and continue pipeout
3. Waterproof Membrane the area finishing Waterproofing Membrane on the **LEAK CONTROL FLANGE**
4. Use **GRATE ADAPTOR** to adjust to the correct height for tiles
5. Sit **GRATE** on **GRATE ADAPTOR** and fill gap between tiles and **GRATE** with either sealant or grout

For Vinyl:

1. Fix **LEAK CONTROL FLANGE** in place on floor using screws/sealant
2. Attach **RISER PIPE** and **TRAP** underneath **LEAK CONTROL FLANGE** and continue pipeout
3. Vinyl over and into **LEAK CONTROL FLANGE** and fix **GRATE** using supplied screws to hold vinyl and **GRATE** down

TILE FLOOR KIT SQUARE

DESCRIPTION	ITEM NO.
100mm	169.100.50TKS
100mm	169.100.65TKS
80mm	169.80.50TKS
80mm	169.80.65TKS



TILE FLOOR KIT ROUND

DESCRIPTION	ITEM NO.
100mm	169.100.50TKR
100mm	169.100.65TKR
80mm	169.80.50TKR
80mm	169.80.65TKR



VINYL FLOOR KIT

DESCRIPTION	ITEM NO.
100mm	169.100.50VK
100mm	169.100.65VK
80mm	169.80.50VK
80mm	169.80.65VK



CHROME GRATE SQUARE - TILE

DESCRIPTION	ITEM NO.
100mm	169.100.CPS
80mm	169.80.CPS



CHROME GRATE ROUND - TILE

DESCRIPTION	ITEM NO.
100mm	169.100.CPR
80mm	169.80.CPR



VINYL GRATE

DESCRIPTION	ITEM NO.
Vinyl Grate	169.CPV



LEAK CONTROL FLANGE - TILE

DESCRIPTION	ITEM NO.
100mm	126.100
80mm	126.80



LEAK CONTROL FLANGE - VINYL

DESCRIPTION	ITEM NO.
100mm	126.100V
80mm	126.80V



FLOOR DRAIN KITS

Everything you need for a floor drainage solution all in one 'easy to use' kit

SURFACE DRAINAGE SYSTEM

In tough NZ conditions, channeling water effectively around a property is vital. And our surface drainage systems can certainly handle the storm.

Aquafit cesspits are built tough, durable and are designed to keep installation as simple as possible for you.

See our chart to find the right Cess Pit size for your job.



Questions about Aquafit products or the related cesspit measurements? Give us a call – 0508 AQUAFIT.

Sizing Chart Tip

This sizing chart lays out all the cesspit sizes side by side so there's no confusion.

CESSPIT MEASUREMENTS			
Code	Cesspit Depth (mm)	Grate Sizing Diameter (mm)	Outlet Invert Height (mm)
STLR800	800	350	280
STLR	700	350	320
STLS	600	350 x 350	320
STSR	510	260	280
STSS	510	250 x 250	280
STM	300	250 x 250	N/A
CONCRETE CESSPIT MEASUREMENTS			
CSTS	600	320 x 320	N/A

CESSPIT LARGE ROUND

DESCRIPTION	ITEM NO.
COMPLETE	STLR
BASE ONLY	STLRB
GRATE ONLY	STLRG
RISER	STLRR



CESSPIT LARGE SQUARE

DESCRIPTION	ITEM NO.
COMPLETE	STLS
BASE ONLY	STLSB
GRATE ONLY	STLSG
RISER	STLSR



CESSPIT SMALL ROUND

DESCRIPTION	ITEM NO.
COMPLETE	STSR
BASE ONLY	STSRB
GRATE ONLY	STSRG



CESSPIT SMALL SQUARE

DESCRIPTION	ITEM NO.
COMPLETE	STSS
BASE ONLY	STSSB
GRATE ONLY	STSSG



CESSPIT MINI

DESCRIPTION	ITEM NO.
COMPLETE	STM
BASE ONLY	STMB
GRATE ONLY	STMG



SYPHON

DESCRIPTION	ITEM NO.
	SSY



CONCRETE CESSPIT

DESCRIPTION	ITEM NO.
COMPLETE	CSTS
BASE ONLY	CSTSB



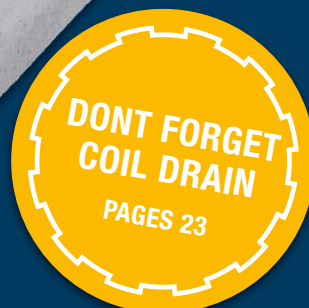
SQUARE FRAME & GRATE SET

DESCRIPTION	ITEM NO.
	STSFG



NEED CHANNELS & GRATES?

We've got lots of options available for channels and grates, so talk to us about what you need – 0508 AQUAFIT



HEAVY DUTY SEWER SYSTEM

Setting up with SN16 for council sewer applications, or just need peace of mind with strength you can depend on?

Whatever your purpose, Aquafit have all you need to get that heavy duty sewer up and running.

We carry a wide range of pipes and fittings from 100-375mm for general municipal drainage and where heavy loads may affect buried pipes.

And if your project weighs in on a heavier scale, with our manufacturing partners, we can cut, machine, weld and fibreglass reinforce any product you need to get the job done.



SN16 PIPE PIPE SN16 X 6M

DESCRIPTION	ITEM NO.
100mm	100.100.SN16
150mm	100.150.SN16
175mm	100.175.SN16
225mm	100.225.SN16
300mm	100.300.SN16
375mm	100.375.SN16



SN16 MANHOLE STARTER

DESCRIPTION	ITEM NO.
100mm	Z1500.100
150mm	Z1500.150
175mm	Z1500.175
225mm	Z1500.225
300mm	Z1500.300



SN16 MANHOLE STARTER GRITTED

DESCRIPTION	ITEM NO.
100mm	Z1500.100G
150mm	Z1500.150G
175mm	Z1500.175G
225mm	Z1500.225G
300mm	Z1500.300G



EARTHERWARE MANHOLE STARTER

DESCRIPTION	ITEM NO.
100mm	Z1500.100E
150mm	Z1500.150E
175mm	Z1500.175E
225mm	Z1500.225E
300mm	Z1500.300E



LONDON JUNCTION M&F

DESCRIPTION	ITEM NO.
100mm	Z1574.150.100.88



LONDON JUNCTION DOUBLE SOCKET

DESCRIPTION	ITEM NO.
100mm	Z1504.150.100.88



LONDON JUNCTION DOUBLE SPIGOT

DESCRIPTION	ITEM NO.
100mm	Z1584.150.100.88



DROP JUNCTION

DESCRIPTION	ITEM NO.
100mm	ZDJ100
150mm	ZDJ150



Why Aquafit?

Service with Value

As well as great products at great prices, we offer alot more...

A wealth of experience and advice when you need it and of course great customer service bringing you the right gear on time, every time.

WE MAKE THE IMPOSSIBLE POSSIBLE.

Custom build with Aquafit.

No matter how tough you think your job may be, we can make it happen.

And it doesn't have to blow the budget either. Here at Aquafit we know the business, we know what'll work, and we can custom build to turn your concept into a reality. So talk to us today about a simple solution for your next project.

We're passionate about pipes - It's what we do.



ACCESSORIES

We're pipe and fitting specialists here at Aquafit, but there are a few other essentials you need to get the job done and dusted. So we've tried to stock all the core items you may need – from glue, to lube, to rubber gloves...

SOLVENT CEMENT

DESCRIPTION	ITEM NO.
4L GLUE	SC4000



SOLVENT CEMENT

DESCRIPTION	ITEM NO.
500ml GLUE	SC500



CLEANER PRIMER

DESCRIPTION	ITEM NO.
RED 4L	CP4000



CLEANER PRIMER

DESCRIPTION	ITEM NO.
RED 500ml	CP500



LUBE - MEDLUBE

DESCRIPTION	ITEM NO.
500mg	L500
250mg	L250



EPOXY - RESIN

DESCRIPTION	ITEM NO.
8L	E8000
2L	E2000
1L	E1000



UNISEAL

DESCRIPTION	ITEM NO.
100mm	US100
150mm	US150
50mm	US50
80mm	US80
90mm	US90



POPULAR PRODUCT

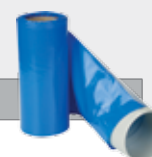
PVC TAPE

DESCRIPTION	ITEM NO.
50mm WIDE	PSLT



PIPE SLEEVE

DESCRIPTION	ITEM NO.
BLUE PLASTIC	PSL



GLOVES

DESCRIPTION	ITEM NO.
100 PACK	SGRG



POPULAR PRODUCTS

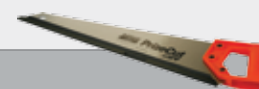
MARKER PAINT

DESCRIPTION	ITEM NO.
SPRAY	SMP



HANDSAW

DESCRIPTION	ITEM NO.
	TWS



TAPE MEASURE

DESCRIPTION	ITEM NO.
	TWS



PIPE TEST PLUGS

DESCRIPTION	ITEM NO.
40mm	TP40
50mm	TP50
65mm	TP65
100mm	TP100
150mm	TP150
175mm	TP175
225mm	TP225





**STOCK
SERVICE
SATISFACTION**

**AQUAFIT 'TRIPLE S'
GUARANTEE**



AQUA-FIT
FOR PIPES AND FITTINGS

CONSISTENCY \ ADVICE \ QUALITY \ VALUE
FREephone 0508 278 234 WWW.AQUAFIT.CO.NZ

AQUA-FIT
FOR PIPES AND FITTINGS